

LIFI[™]

Optimized Light Fidelity[™] solution for high-intensity long-life applications



- Up to 4400 lumens of light output provided in collimated or focused beam
- Useful lifetime more than 5 times longer than conventional lamps
- Continuous spectrum with up to 88 CRI
- Turn-on rate 10 times faster than other high intensity lamps
- Dynamic control of brightness with digital communication port

Ideal for Projection Display, Digital Signage & Fiber Optic Lighting



LIFI™

Typical Product Data at-a-Glance

Part Description	LIFI™ (model 4000)	
Ordering Codes ¹	LIFI4KL-C1 (collimated) LIFI4KL-F1 (focused)	
Length (cm)	17.3	
Width (cm)	13.5	
Height (cm)	9.1	
Enclosure Finish	Natural aluminum	
Rated Average Life ²	See datasheet	
Initial Lumens (within 27mm ² sr)	4000	
Turn-on time (sec.)	6	
Lumen Maintenance at Life (% of initial lumens)	80	
CCT(K), x-coord., y-coord.	8500, x=0.282, y=0.344	
CRI	88	
Dimming Range (%) ³	20-100	
Nominal Power Use (W)	270	
Input Voltage	28	
Input Current (A)	9.5	
MBCP ⁴	320000	
Beam Angle (deg.) ⁵	7	
Std. Package Quantity	4	

¹ LIFI™ offers two option codes, collimated beam for LCD/LCoS micro-display and focused for DLP™ micro-mirror array.

² Operating lifetime characteristics can be obtained by requesting the LIFI™ Reliability Datasheet

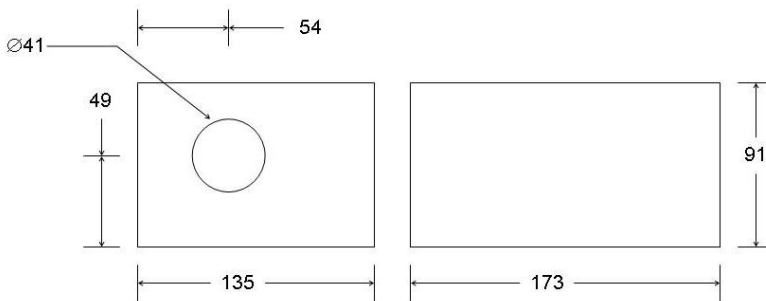
³ Implements Dynamic Dark digital control

⁴ Maximum Beam Candle Power

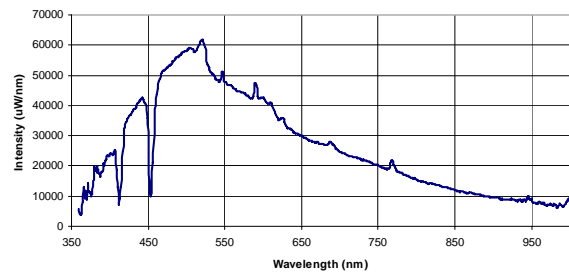
⁵ Total angle within which candle power is at least 50% of maximum

DLP™ is a trademark of Texas Instruments Inc.

LIFI™ Dimensions (mm)



Spectral Power Distribution



Operating Instructions:

Product is designed for use with fan cooling at supplied inlet locations
Product is intended for operation in horizontal orientation

LUXIM Corporation

1171 Borregas Avenue
Sunnyvale, CA 94089
tel: +1-408-734-1096
email: info@LUXIM.com
Printed in USA 2/07

www.LUXIM.com